

Relay Control Module

Relay Control with the SafeTrack System

Monitor Your Grain, Anytime, Anywhere.

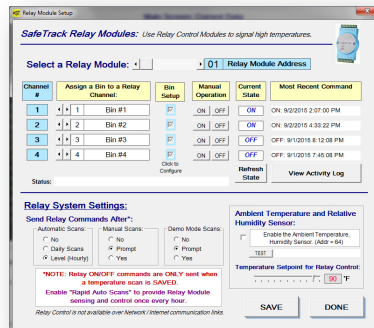
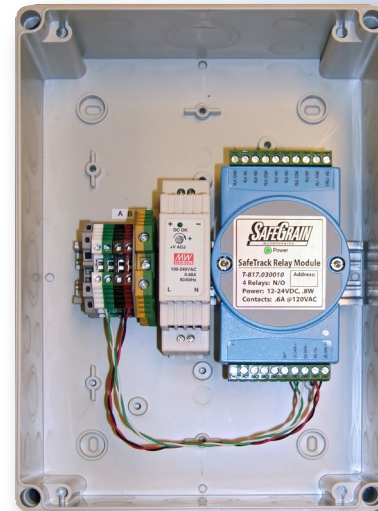
Use Relay Control Modules for automatic exhaust-fan control with the SafeTrack Grain Temperature Monitor System. Also toggle relays for PLC input or activate alert signals in response to high temperatures in your grain bin.

Relay Control Modules in Action

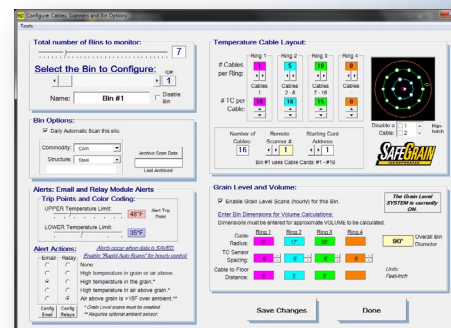
Configurable setpoints to trigger relays

Easily configure the conditions to toggle relays:

- ◆ Air above grain >15° above ambient, for automatic condensation control
- ◆ High temperature in grain
- ◆ High temperature in air above grain



Assign Relays to Bins



Set Conditions for Relay Operation

- ◆ 4 discreet relays per Module
- ◆ Assign 1 Bin to each relay (4 per Module)
- ◆ Designed for exhaust fan control, PLC inputs and for visual alert indicators

- ◆ Supply: 120VAC or 12-24VDC
- ◆ SafeTrack radio or hardwired RS-485 connectivity
- ◆ 120VAC .6 Amp contacts - Dry, non-powered

